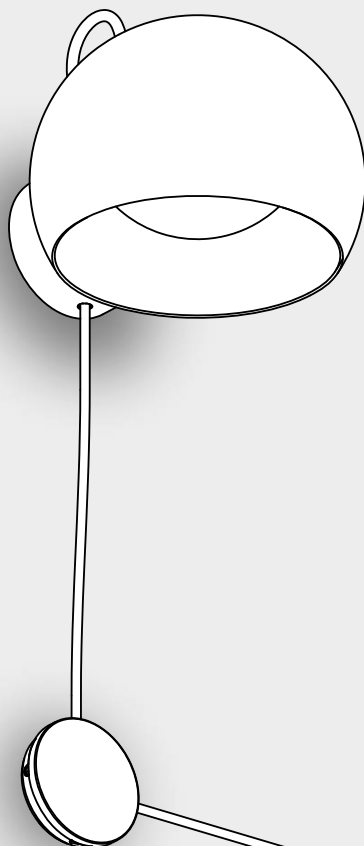


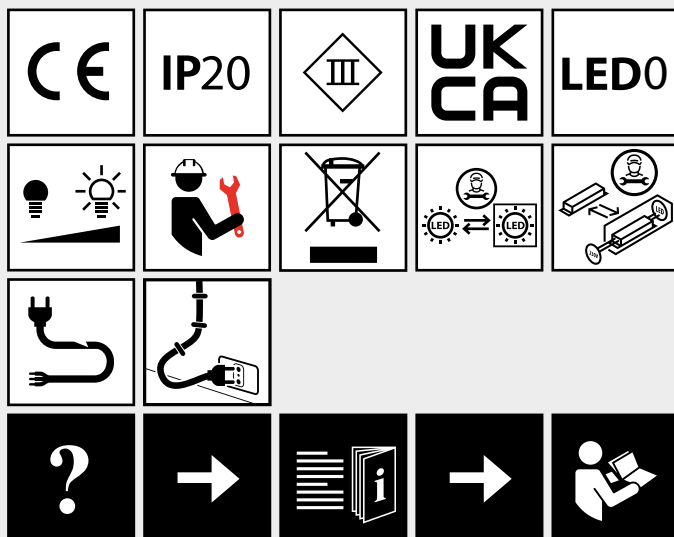
IXA SPOT PLUG

design
Foster + Partners
Industrial Design



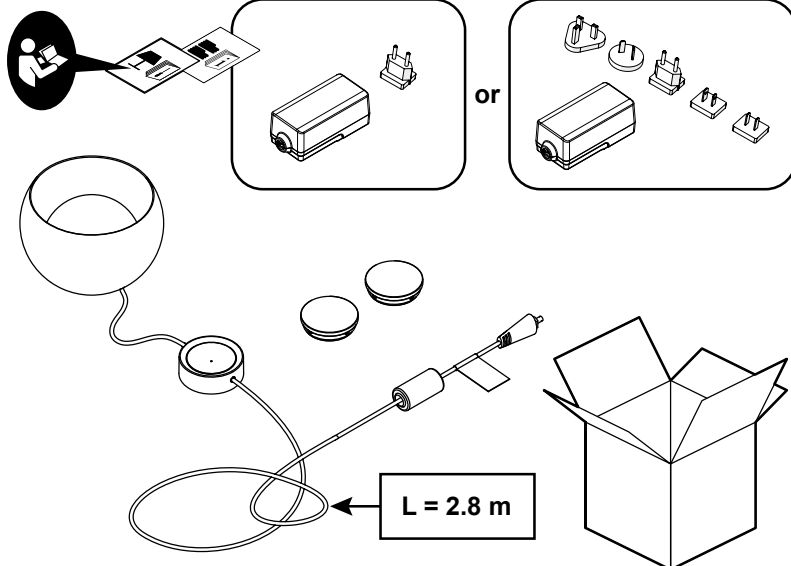


i

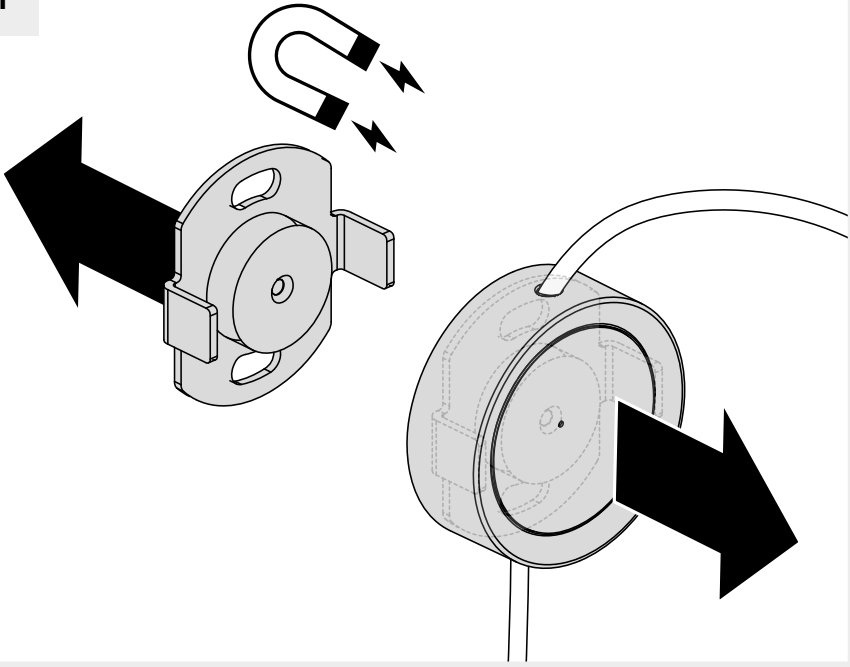


EU market only

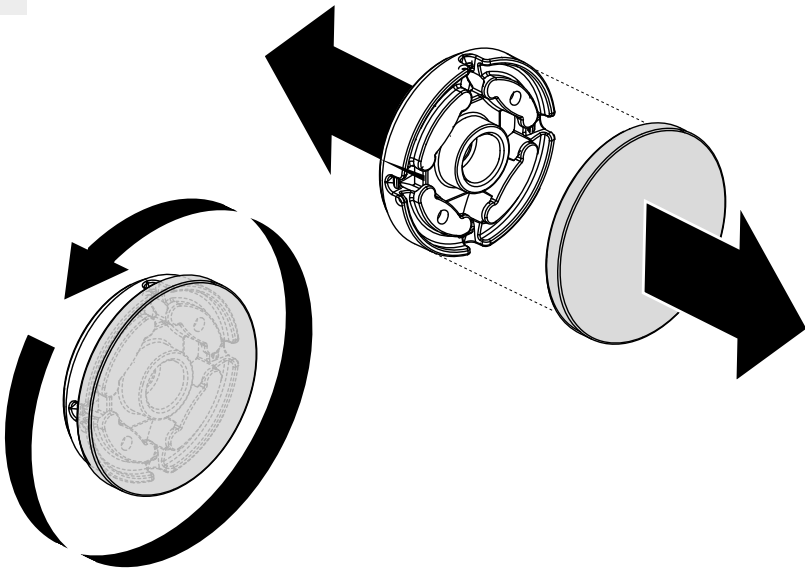
worldwide market



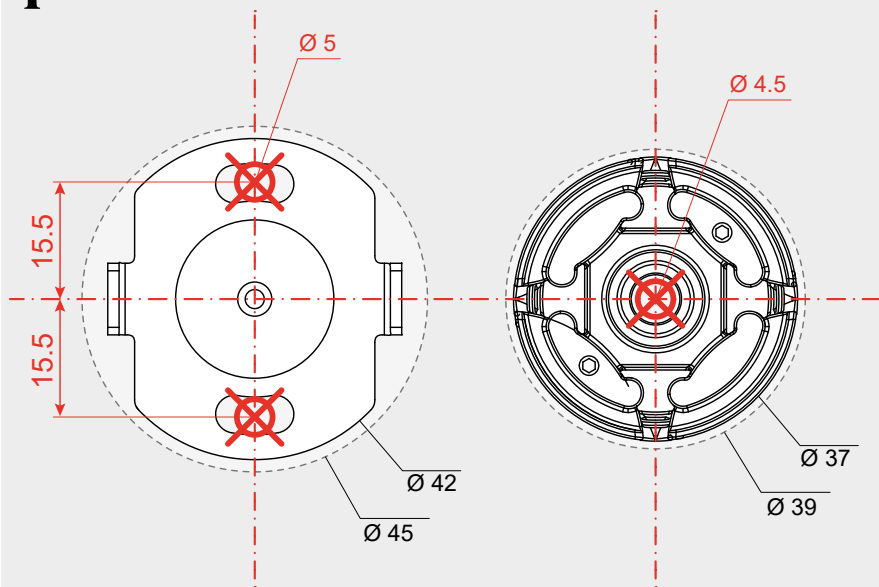
1



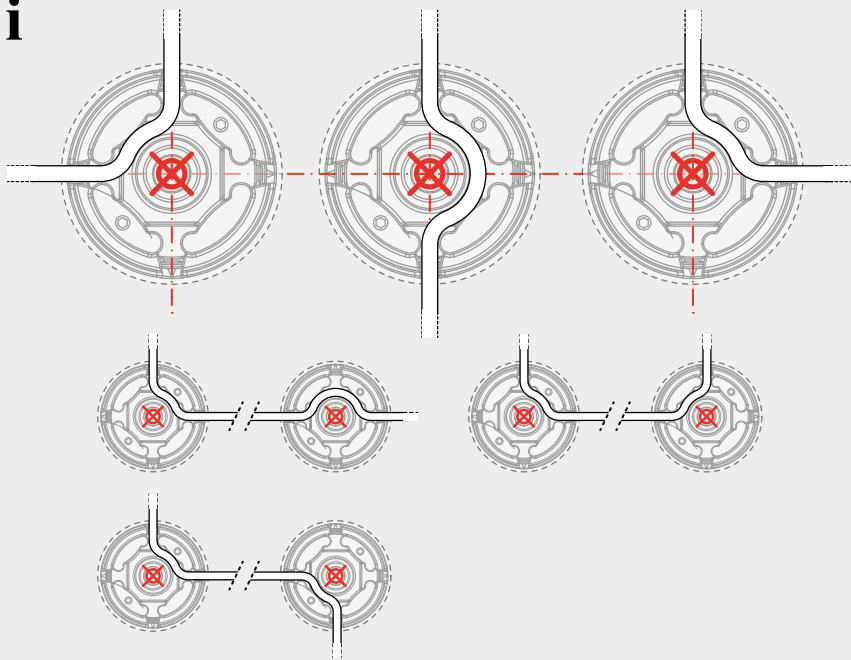
2



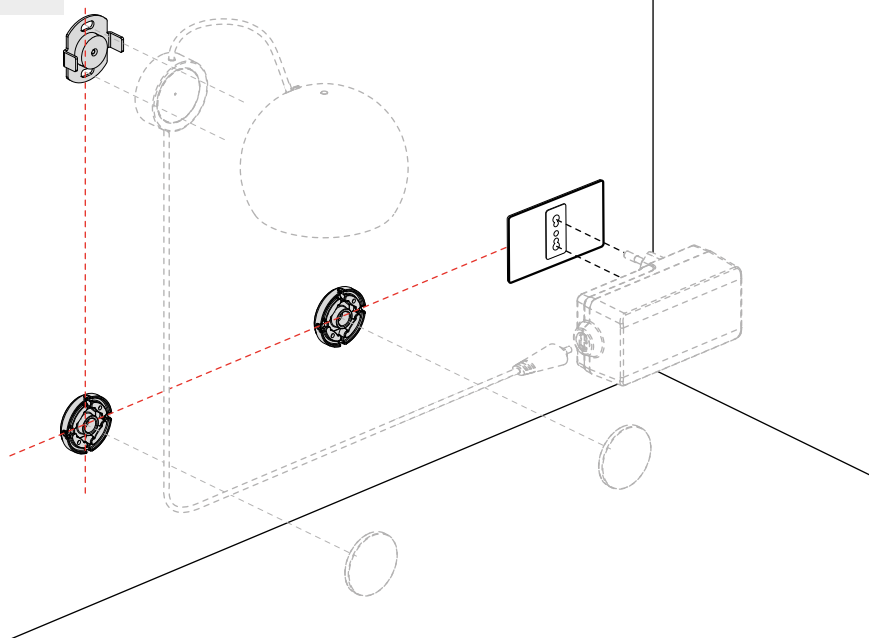
i



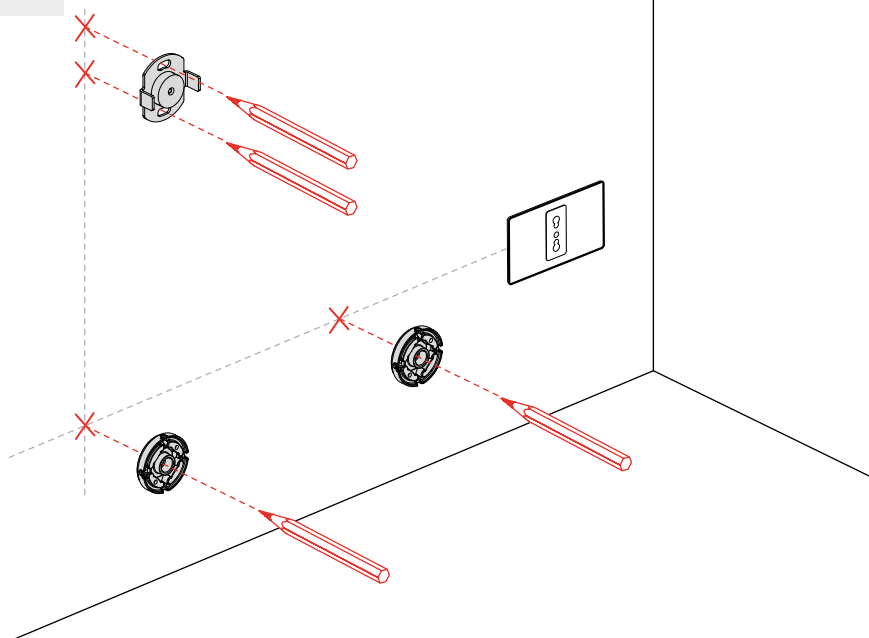
i



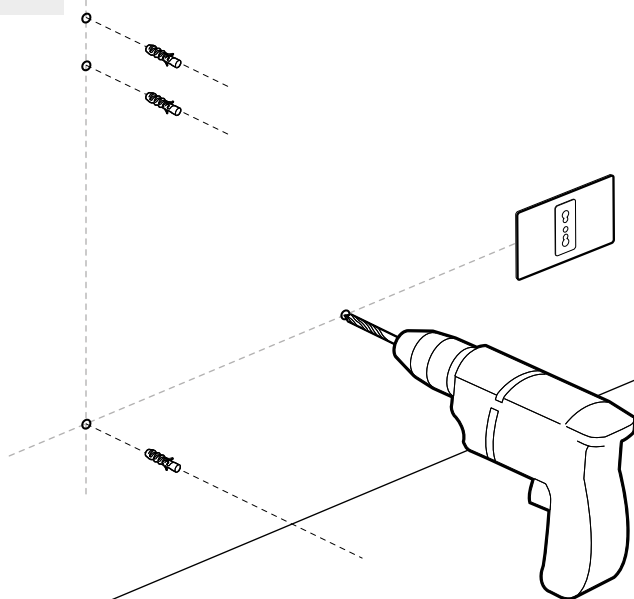
6



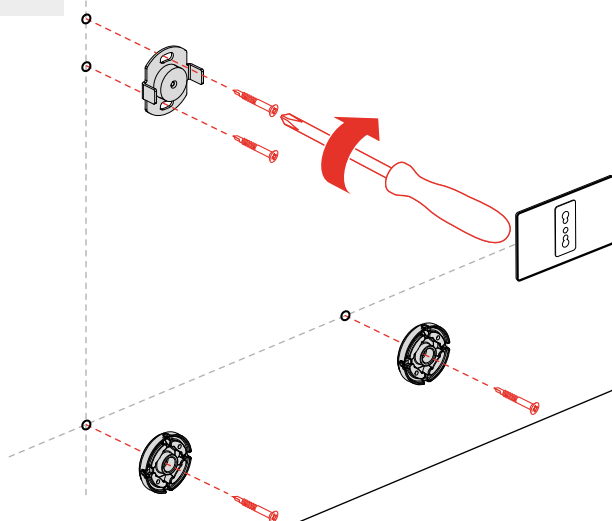
7

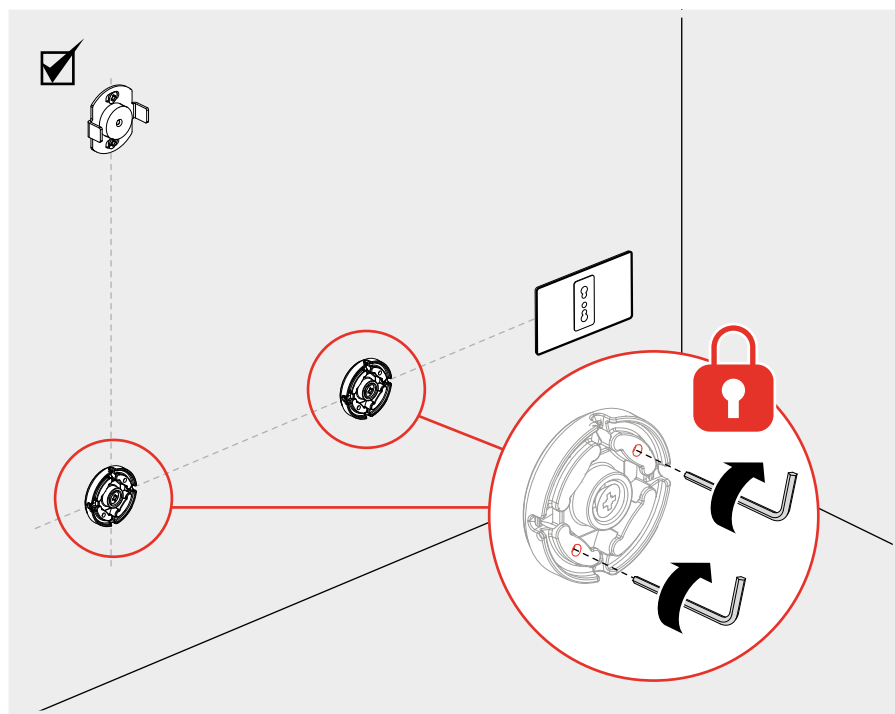


8

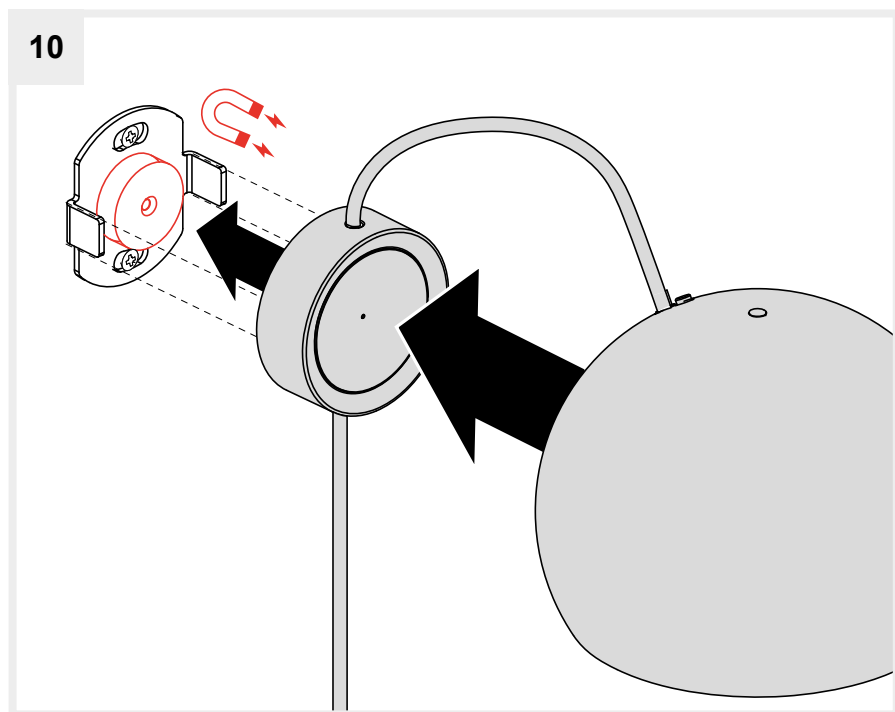


9

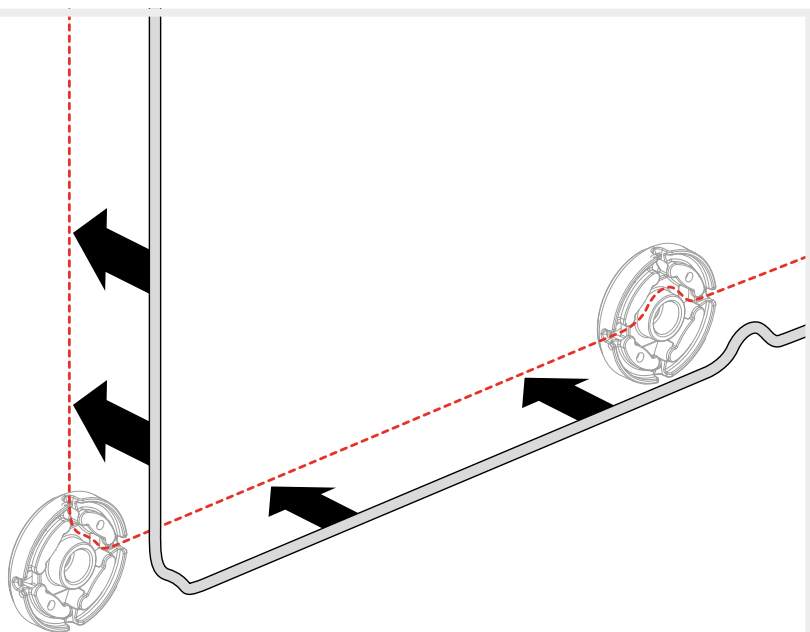




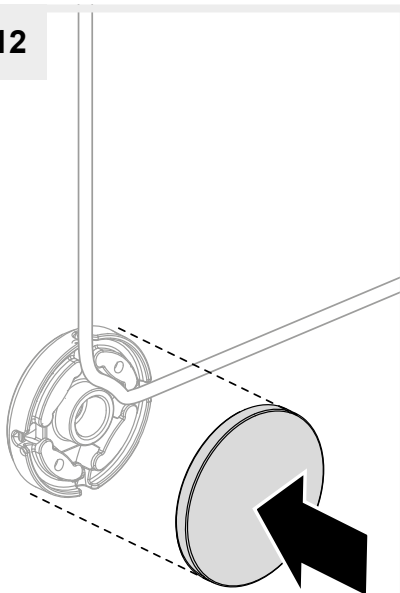
10



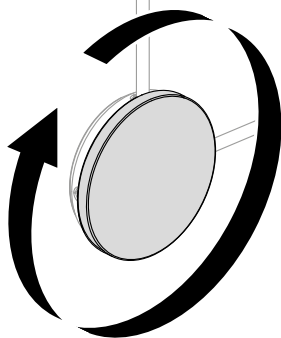
11



12

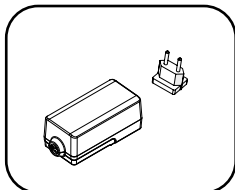


13



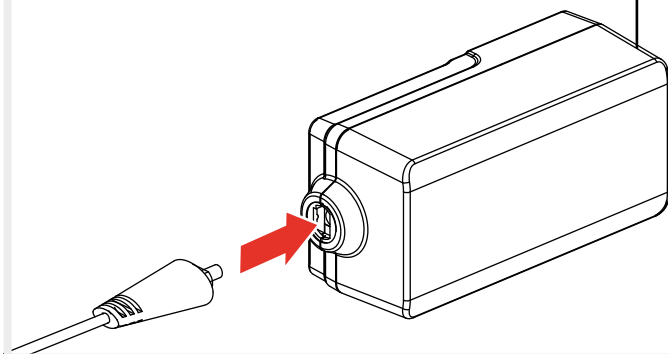
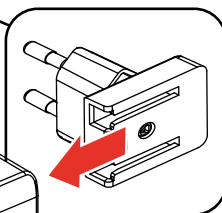
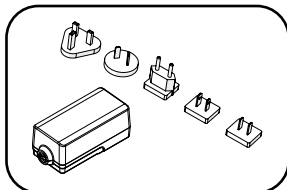
14

EU market only



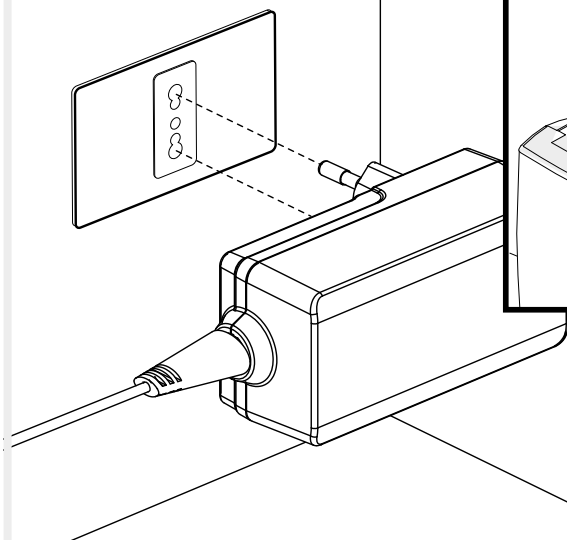
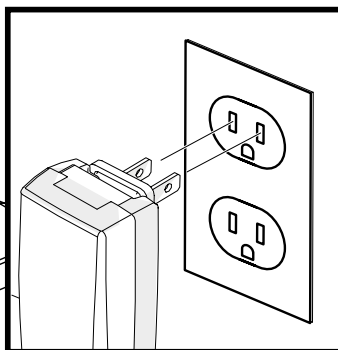
or

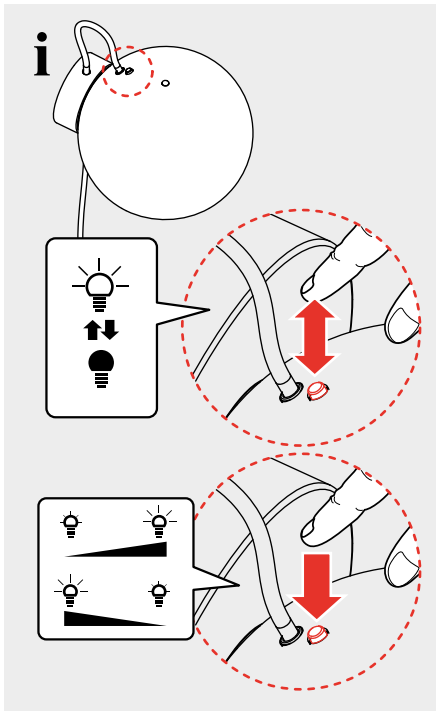
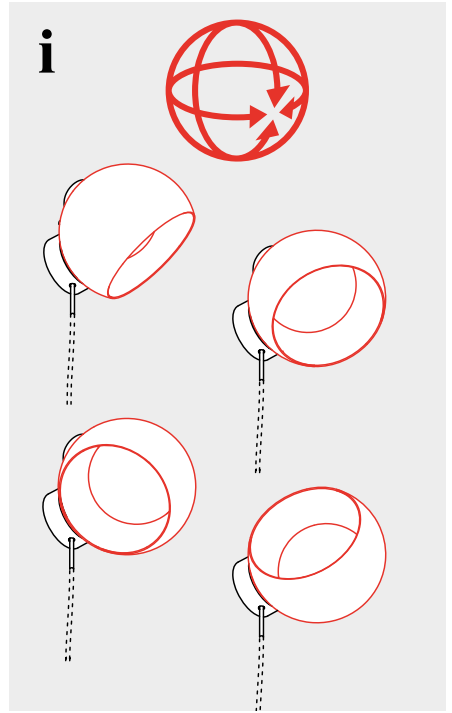
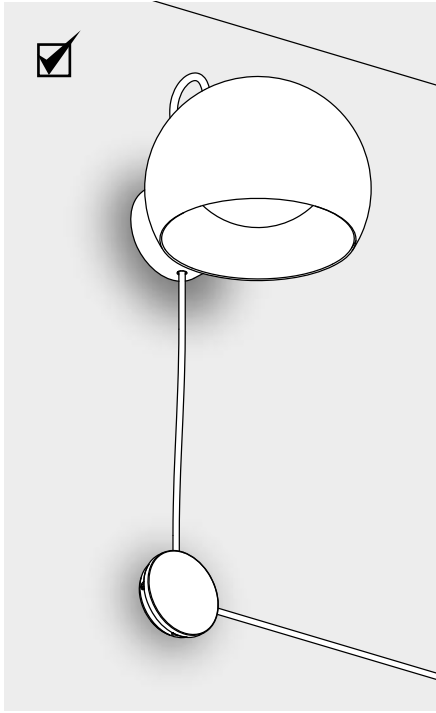
worldwide market

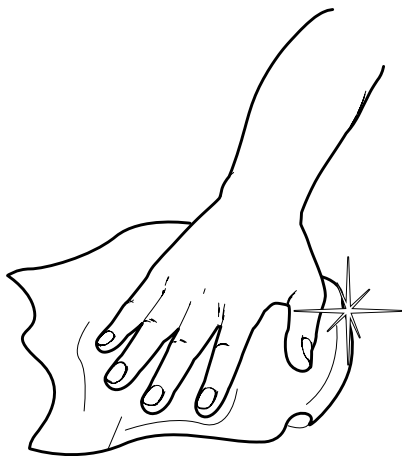
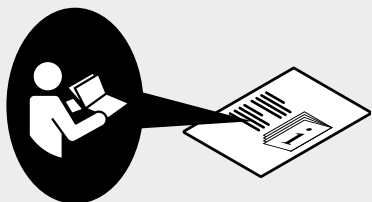


15

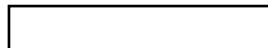
For USA and Canada only







Artemide®



Artemide

via Bergamo, 18
20006 Pregnana M.se (MI)
ITALIA

tel. +39 02 935 181
fax +39 02 935 90 254
fax +39 02 935 90 496

www.artemide.com

VAT IT00846890150

Artemide Inc.

250 Karin Lane
Hicksville, NY 11801

tel. 631 694 9292
Toll Free 1-877-Art-9111
Fax 631 694 9275

www.artemide.net

cod. Y513002102A